

EZSPAN

PLASTIC BELT CONVEYOR

Span Tech's new line of "belt" conveyors. The EZSpan System uses extremely thin, modular plastic chain giving you several advantages over typical belt conveyors including: capability, maintenance, and price.



No Tracking Issues

The EZSpan uses sprocket driven modular plastic chain (not a fabric belt) eliminating any tracking issues.

Constant End to End Distance

There are no Take-Up units at the ends of the conveyor, meaning the length you order is the length you get.

No Integration Problems

The thinnest standard belt conveyor made with a profile height of only 1.5in (38.7mm). Very easy to integrate with existing machinery.

Hassle-Free Maintenance

The drive unit has been designed for increased performance and to make maintenance easier than ever.

Recommended For:



E-Commerce • Pharmaceuticals • Cosmetics
• Packaging

Fixed length with *NO* takeups

2.4 ft. - 30 ft
(730mm - 9144mm)

**6mm Plain Chain -or-
6mm Raised Top Chain**

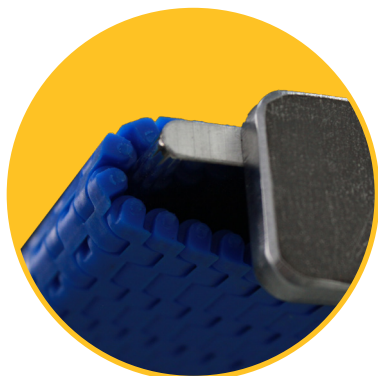
**Completely
customizable to
fit your material
handling needs.**

**Automatic Takeup with
"Tension Sensor"**

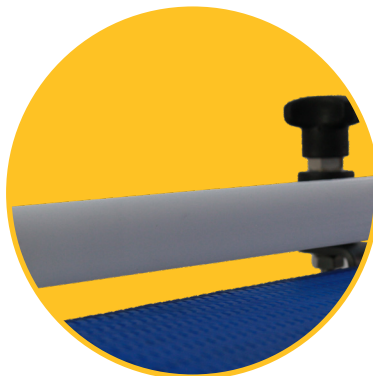
**Sprocket Driven Unit
designed for easy
maintenance & *NO*
tracking issues.**

**Low Profile
option for easier
integration.**

**VFD INCLUDED:
120 / 240 VAC,
1 phase input
30 ft/min to 110 ft/min
(9.1 m/min to 33.5 m/min)
-OR-
3 PHASE 240 VOLT**



**-OPTIONAL-
LOW PROFILE NOSEBAR**



**-OPTIONAL-
ADJUSTABLE GUIDE RAIL**



**-OPTIONAL-
SUPPORTS &
CASTERS**



Span Tech LLC Main Office • 1115 Cleveland Avenue • Glasgow, KY 42141 • P (877) 651.9166
Span Tech LLC Sales & Service Center • 1201 Dolphin Ct Suite A • Waukesha, WI 53186 • P (262) 549.9990

www.SPANTECHCONVEYORS.com